



## 3-132.01 Rod Latch RS PrB



### Avantages

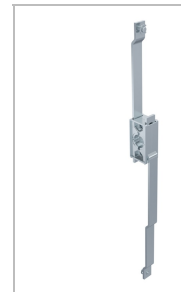
- For cutout B.
- For application within the sealed area.
- Can be equipped with escutcheon or swinghandel.
- RH / LH application through double symmetry.
- In this configuration both round rods have the same length.
- The 4 weld-studs for the rod guides are positioned exactly in the line with the center of the latch system.
- Grounding by grounding clip (optional).

### Materials

- **Rod latch:** zinc die, untreated / steel, zinc plated

### Notes

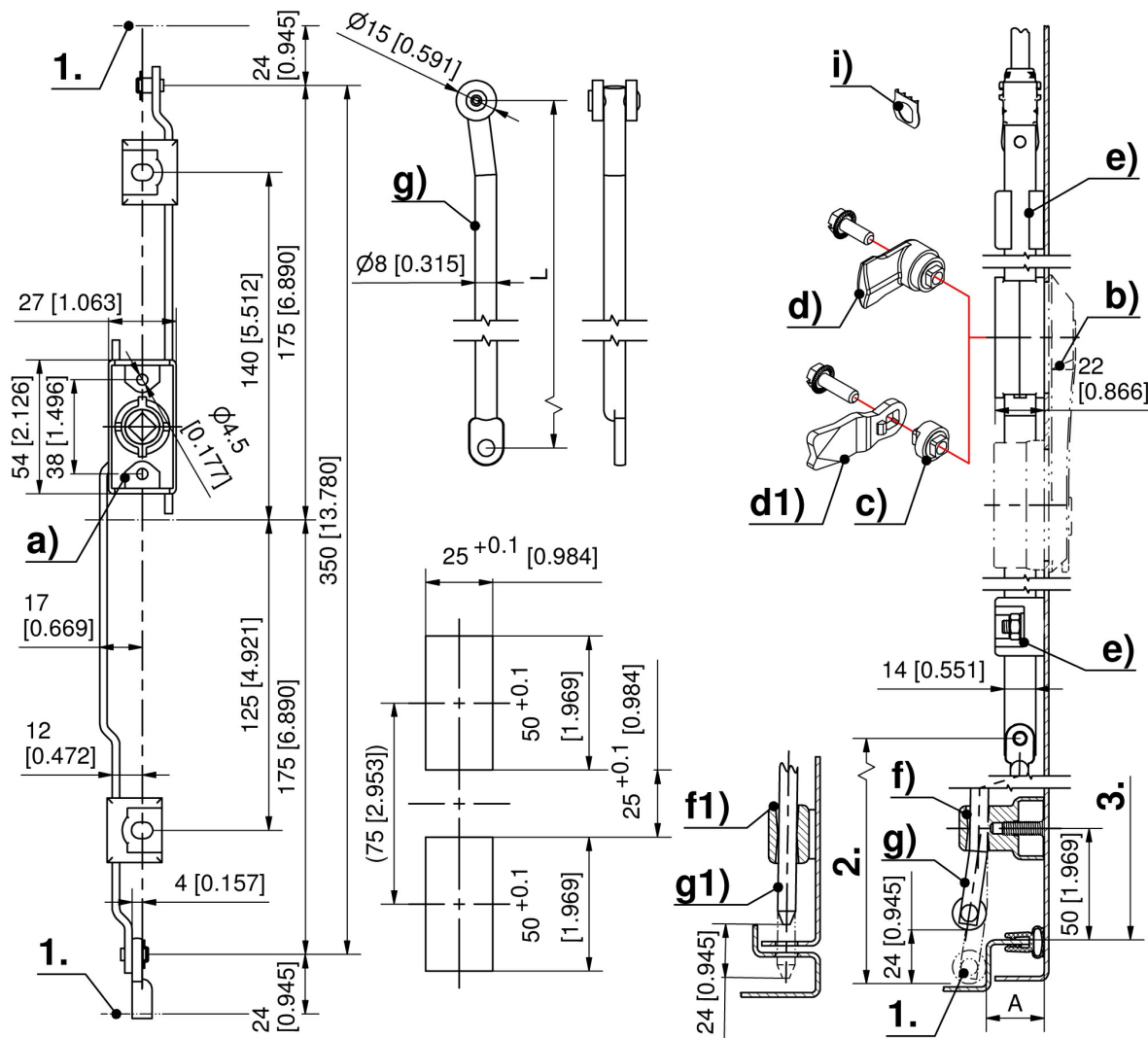
1. stroke 24mm
  2. length L
  3. clearance
- Both flat rods of the rod latch have to be used with rod guides (e).



## Rod latch

	Part Number	Rod fastening	Installation type	Delivery Unit
a)	208-9016.00-00000	C-clip	screw-on	1 pc.

- b) 3-070 **Swinghandle FS PrB**
- b) 3-135 **Escutcheon for Rod Latch PrA**
- b) 3-136 **Cutout-Cover PrA / PrB / PrC**
- c) 3-163 **Cam Adapter Zinc Die**
- d) 208-9401.00-00000 **Cam with square, A25, L30 with serrated screw M6x16**
- d) 208-9402.00-00000 **Cam with square, A20, L40 with serrated screw M6x16**
- d) 208-9404.00-00000 **Cam with square, A18, L40 with serrated screw M6x16**
- d) 208-9408.00-00000 **Cam with square, A30, L30 with serrated screw M6x16**
- d1) 1-102 **Cams L35/45 Steel**
- e) 3-910 **Rod Guide FS 23mm**
- f) 1-190 **Rod Guides RS**
- f) 1-193 **Rod Guide RS**
- f1) 1-192 **Rod Guides RS**
- g) 201-9021.00-Lxxmm **Round rod, variable length, with eye parallel to the roller**
- g1) 201-0111.00-Lxxmm **Round rod, variable length**
- i) 3-011 **Grounding Clip Stainless Steel**



Formula for rods:  
cutout in the door center

$$L_2 = \frac{\text{clearance 3. - 10mm [0.394] (tolerance) - Rod Latch System in retraced condition 350mm [13.780]}{2}$$