



3-132.02 Rod Latch RS PrC



Avantages

- For cutout C.
- Both flat rods of the rod latch have to be used with rod guides (e).
- In this configuration both round rods have the same length.
- The 4 weld-studs for the rod guides version e) and f) are positioned exactly in the line with the center of the latch.
- RH / LH application through double symmetry.
- Grounding by grounding clip (optional).

Materials

- **Rod latch:** zinc die, untreated / steel, zinc plated

Notes

1. stroke 24mm
 2. length L
 3. clearance
- Both flat rods of the rod latch have to be used with rod guides (e).

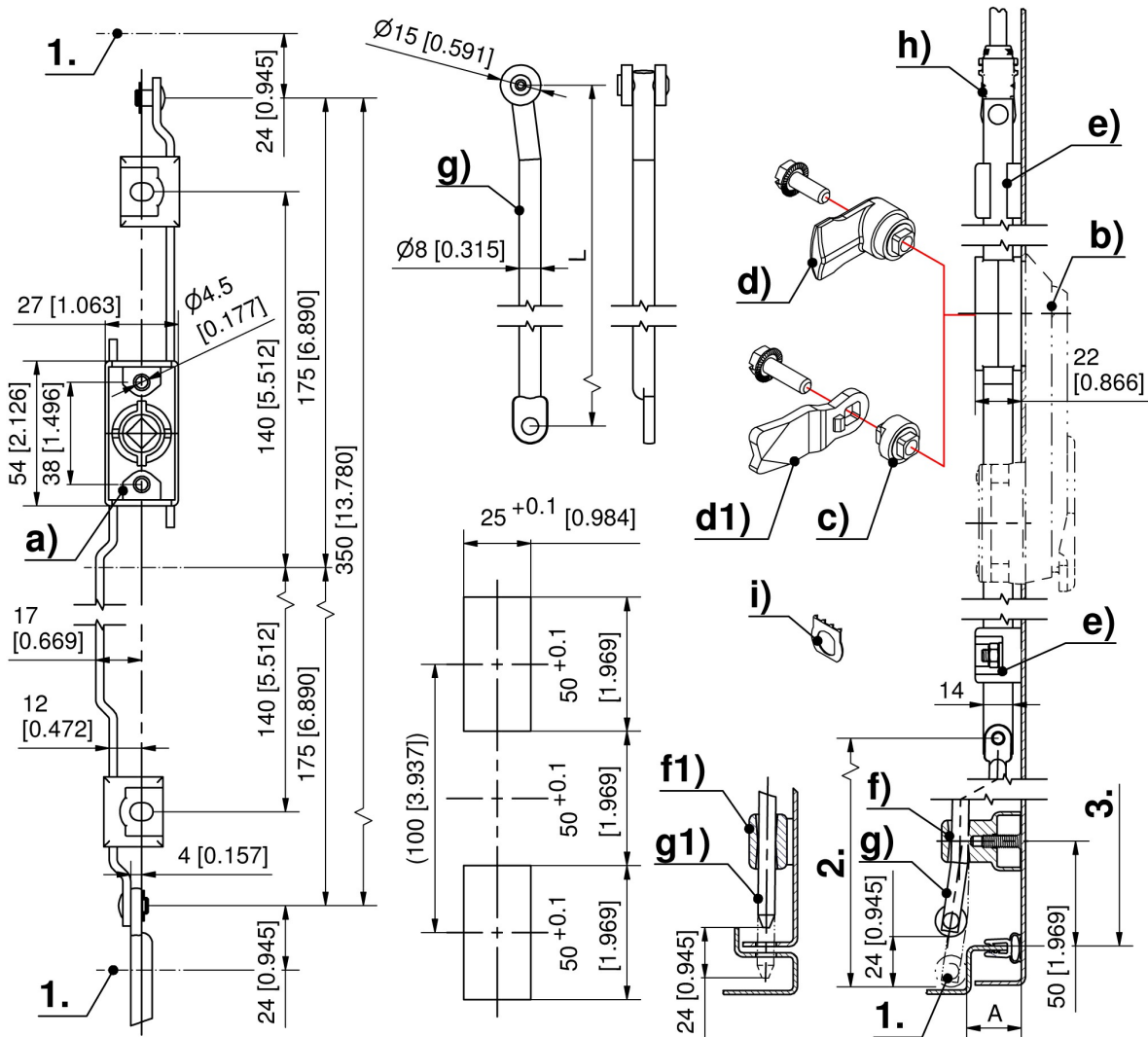


Rod latch

	Part Number	Rod fastening	Installation type	Delivery Unit
a)	208-9015.00-00000	C-clip	screw-on	1 pc.

* Accessories

- b) 3-101 **Escutcheons and Inserts**
- b) 3-140 **Handles for Rod Latch FS PrC**
- b) 3-150 **Swinghandle FS PrC for PHZ**
- c) 3-163 **Cam Adapter Zinc Die**
- d) 208-9401.00-00000 **Cam with square, A25, L30 with serrated screw M6x16**
- d) 208-9402.00-00000 **Cam with square, A20, L40 with serrated screw M6x16**
- d) 208-9404.00-00000 **Cam with square, A18, L40 with serrated screw M6x16**
- d) 208-9408.00-00000 **Cam with square, A30, L30 with serrated screw M6x16**
- d1) 1-102 **Cams L35/45 Steel**
- e) 3-910 **Rod Guide FS 23mm**
- f) 1-190 **Rod Guides RS**
- g) 201-9021.00-Lxxmm **Round rod, variable length, with eye parallel to the roller**
- g1) 1-170 **Round Rods with Eye**
- g1) 1-180 **Round Rods for Adapter**
- h) 1-181 **Adapter for Round Rods Ø8mm PA**
- h) 1-181.01 **Adapter for Round Rods Ø8mm / Ø10mm Zinc Die**
- i) 3-011 **Grounding Clip Stainless Steel**



Formula for rods:
cutout in the door center

$$L_2 = \frac{\text{clearance 3. - 10mm [0.394] (tolerance) - Rod Latch System in retraced condition 350mm [13.780]}{2}$$